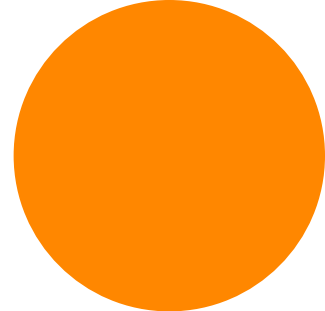




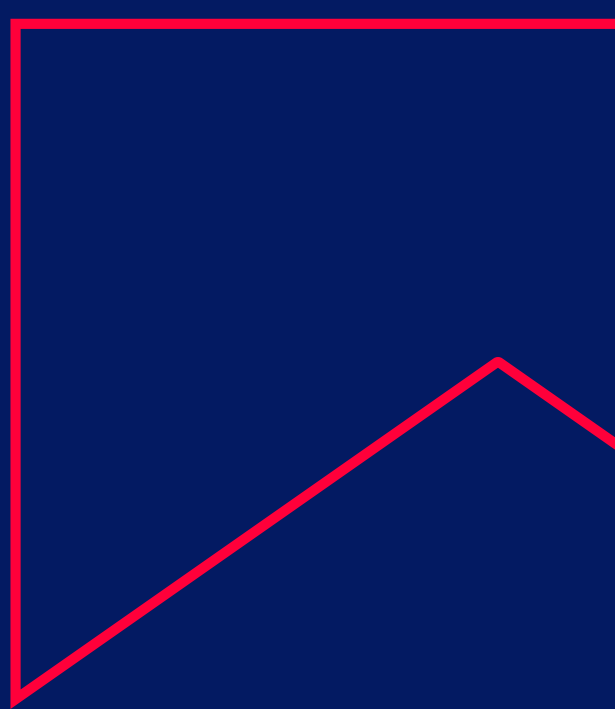
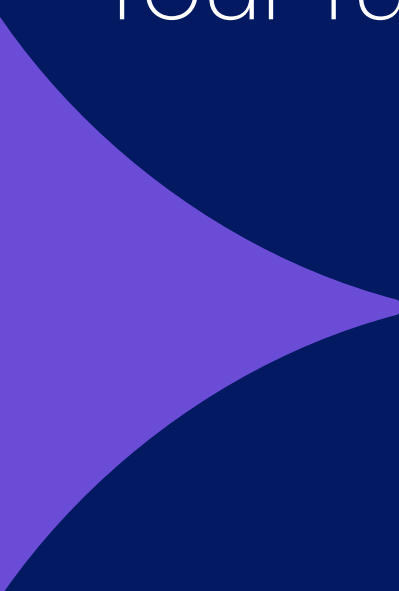
**Bow Valley  
College**



# Viewbook

2024

Your future says thanks



# Begin a new path with us

## Acknowledgement of territory

Bow Valley College aims to uphold the intention of the numbered friendship treaties from the perspective of Indigenous Peoples. As an institution in Treaty 7 territory, it is our responsibility to pursue a deeper understanding of this Treaty so that we can respect and honour its terms and Indigenous Peoples' legal and inherited rights.

Through our words and actions, Bow Valley College honours the territories and Peoples of the Blackfoot Confederacy, which includes the Siksika, Kainai, Piikani, and Amskapi Piikani (Blackfeet) First Nations, as well as the Îyāxe Nakoda: including the Goodstoney, Chiniki, and Bearspaw First Nations; and the Tsuut'ina First Nation.

We also recognize the connection and autonomy of the Métis Nation of Alberta within the historical Northwest Métis homeland.

We join all Nations in celebrating the unique histories, traditions, cultures, and contributions of Indigenous Peoples as we continue our journey on the road toward reconciliation together.





<b>4</b>	<b>Why choose Bow Valley College?</b>
<b>6</b>	<b>What's your goal?</b>
<b>8</b>	<b>Getting started</b>
<b>10</b>	<b>Chiu School of Business</b>
<b>12</b>	<b>School of Community Studies</b>
<b>14</b>	<b>School of Health and Wellness</b>
<b>16</b>	<b>School of Technology</b>
<b>18</b>	<b>Bow Valley College Centre for Entertainment Arts</b>
<b>20</b>	<b>Regional campuses</b>
<b>22</b>	<b>Alternative pathways for admission</b>
<b>24</b>	<b>English language proficiency requirements</b>
<b>26</b>	<b>School of Foundational Learning</b>
<b>28</b>	<b>School of Global Access</b>
<b>30</b>	<b>Open Studies and transfer opportunities</b>
<b>31</b>	<b>Extended Education and micro-credentials</b>
<b>32</b>	<b>Supporting your success</b>
<b>34</b>	<b>See their journeys: alumni profiles</b>

Program and service information, tuition, and admission requirements are correct at the time of printing and are subject to change.

Graduate satisfaction rates cited in this publication are based on a survey conducted by an independent market research company of 2019-2021 Bow Valley College graduates reporting that they were satisfied with the overall quality of their education experience.

Graduate employment rates cited in this publication are based on a survey conducted by an independent market research company of 2019-2021 Bow Valley College graduates reporting that they were employed in either training-related or other jobs at the point they were surveyed.

# Why choose Bow Valley College?

Bow Valley College celebrates Indigenous students' journeys and is committed to campus-wide Indigenization. All Nations are welcome to learn, practice, and celebrate Indigenous Peoples at the Iniiikokaan Centre, which is devoted to Indigenous student enrichment, expression, and supportive resources.



## We are Calgary's only community college

This means Bow Valley College meets the Government of Alberta's high standards of program quality while maintaining some of the most affordable tuition rates in the province. Don't just take our word for it. Over 94 per cent of our graduates agree that they are satisfied with the program quality and their educational experience at Bow Valley College.



## Diversity is part of who we are

Join students from 148 countries around the world who speak 98 languages. Our 700 employees reflect that diversity too: we speak more than 50 languages combined.



## Graduate work-ready in one or two years

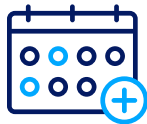
Our one- and two-year programs give you the education you need with hands-on training and experiential learning that makes you ready for your career fast. How can you tell we only teach material relevant to your career? Industry has told us so. In fact, over 91 per cent of our graduates find employment within one year of finishing their studies.



## Learning options that fit your needs

Choose the type of education you need:

- Post-secondary certificates or diplomas
- Post-diploma certificates
- International education
- Academic upgrading
- English language learning
- Extended Education courses



## Choose how you want to study

- Full time or part time
- Online, in class, or other available delivery modes
- During the day or evening
- In Calgary or at one of our regional campuses



## Career support for life

Bow Valley College has your back when you are a student and after you graduate from one of our programs. Access lifetime support for your job search, including resumé and interview preparation.

# What's your goal?

Your journey is as unique as you are, and Bow Valley College provides multiple pathways for you to choose from to get you to where you're going. Wherever you are in life and whatever your goals may be, you can achieve your ambitions here.



## Build your education

Place yourself on the path to further education

Academic Upgrading

English Language Learning

Open Studies

## Your choices

Find the right credentials to launch your professional career and advance your academic studies.



### Academic Upgrading

Enrol in courses designed to help you acquire your high school diploma to begin the career you want or enter the post-secondary world. Bow Valley College Academic Upgrading courses get you ready to jump right into one of our college-level programs or apply to another post-secondary institution.



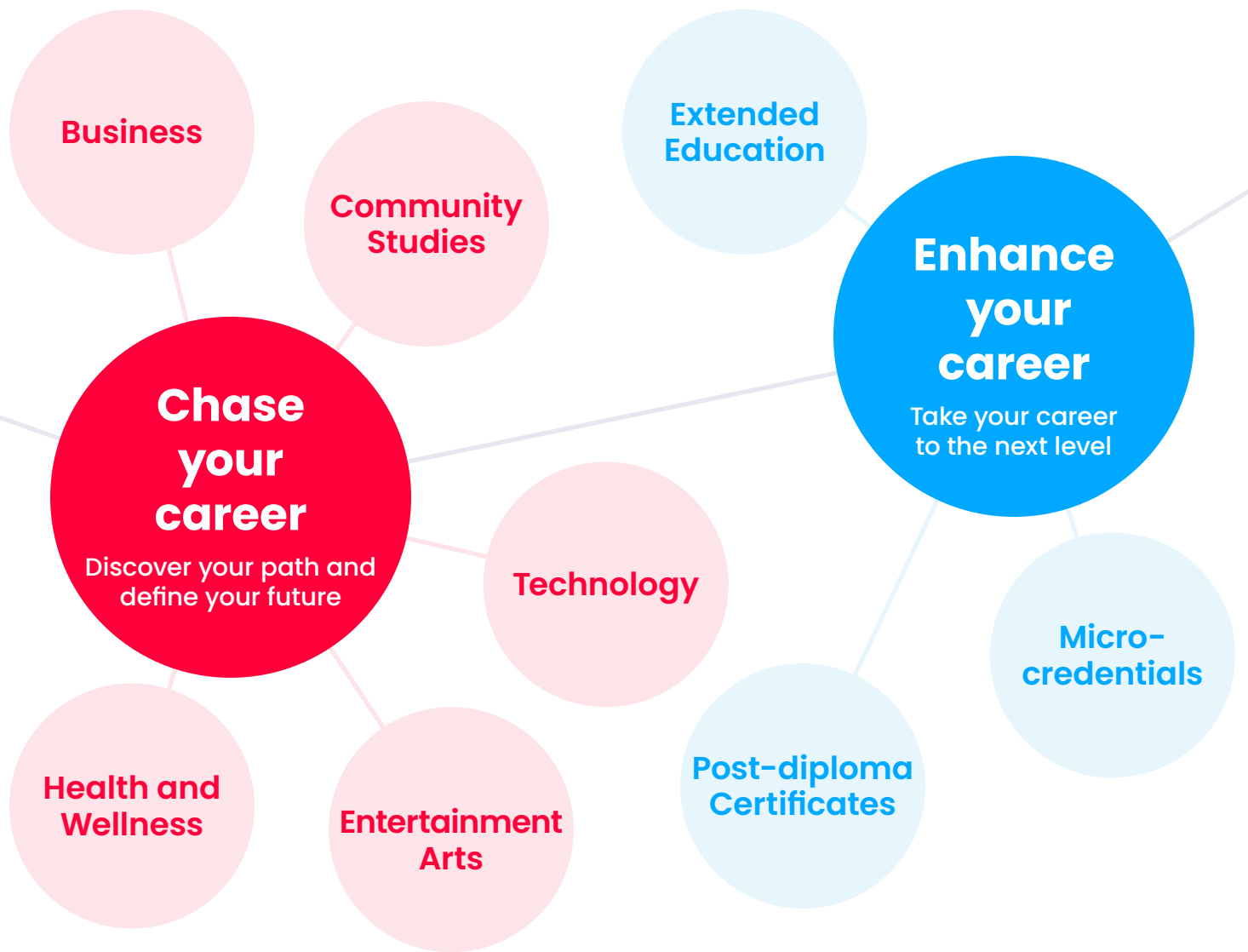
### English Language Learning

Bow Valley College offers two levels of English language training: practical and academic. These two streams are designed to give people with different abilities in English the precise amount of training they need to either enter the workforce, continue academic studies, or live more easily in an English-speaking country.



### Open Studies

Access a variety of courses to explore the post-secondary options available to you at Bow Valley College. You can gain advanced standing in a post-secondary program, explore different program areas, enrol in courses of general interest, or even study as a visiting student (with a letter of permission).



### Certificates and diplomas

These college-level programs take one year (certificates) or two years (diplomas) to complete and are designed to provide you with practical skills and hands-on experiential learning that you can apply to your work.



### Post-diploma certificates

Post-diploma certificates are advanced credentials available to students with prior post-secondary experience. This credential helps students who have existing experience grow their knowledge base and skill set in their field to allow them to reach new career goals.



### Micro-credentials

Micro-credentials are cost-effective, focused certifications obtained by demonstrating competencies required by your industry. These short-term programs help you build on your skills to meet the evolving needs of your industry's demands or help you unlock your next career.

# Getting started

We know that choosing the right program can be overwhelming. We are here to guide you through each step of your journey to find the right program at the right time.

1

Choose the program that suits you

Check out the programs in this viewbook or visit [bowvalleycollege.ca](http://bowvalleycollege.ca) for a list of programs.

2

Check the application open date and apply early

Applications open 11 months before the program begins. Students are admitted on a first-qualified, first-admitted basis, so apply early and submit all relevant documents. Find out more at [bowvalleycollege.ca/apply](http://bowvalleycollege.ca/apply).

3

Gather your transcripts and submit your application

Visit [bowvalleycollege.ca/apply](http://bowvalleycollege.ca/apply) to review how to submit your transcripts and to complete your online application through ApplyAlberta.

4

Pay the non-refundable application fee

A non-refundable application fee of \$75 is required when you apply. Your application will not be processed until the payment is made.

## Admissions timeline\*



### Fall 2023

Applications open  
October 3, 2022

First day of classes  
September 5, 2023

### Fall 2024

Applications open  
October 2, 2023

First day of classes  
September 3, 2024



### Winter 2024

Applications open  
February 1, 2023

First day of classes  
January 10, 2024

### Winter 2025

Applications open  
February 1, 2024

First day of classes  
January 9, 2025



### Spring 2024

Applications open  
June 1, 2023

First day of classes  
May 7, 2024

### Spring 2025

Applications open  
June 3, 2024

First day of classes  
May 6, 2025





## HOW TO USE THIS VIEWBOOK

Use this viewbook as your introductory guide to Bow Valley College and to explore the programs and services available to you. You can then visit [bowvalleycollege.ca](https://bowvalleycollege.ca) to get the most updated content, requirements, and more.

Connect with the Welcome Centre to learn more about the opportunities available to you through Bow Valley College.

### Welcome Centre

First Floor, South Campus  
345 – 6 Avenue SE, Calgary, AB T2G 4V1  
403-410-1402

[info@bowvalleycollege.ca](mailto:info@bowvalleycollege.ca)

For more information, visit  
[bowvalleycollege.ca/visit](https://bowvalleycollege.ca/visit)

\* Exceptions apply. Application closure dates vary by program. Visit [bowvalleycollege.ca](https://bowvalleycollege.ca) for details.

# Chiu School of Business



Business-case competitions



Recognized programs in the industry



Social entrepreneurship development

97%

program quality satisfaction

Program	Start	Duration	Fees
<b>Administrative Professional Certificate</b>	September January	8 months	\$5,683
<b>Business Administration Certificate</b>	September January	8 months	\$6,310
<b>Business Administration Diploma</b>	September January	16 months	\$12,428
<b>Esports Business Management Diploma</b>	September January***	16 months	\$12,244
<b>Financial Planning Certificate of Achievement</b>	September	8 months	\$2,384
<b>Human Resources Certificate</b>	September January	8 months	\$6,184
<b>Legal Assistant Diploma</b>	September	16 months	\$10,111
<b>Medical Office Assistant and Unit Clerk Certificate</b>	September January May	8 months	\$5,215
<b>Risk Management Certificate of Achievement</b>	September	8 months	\$1,788
<b>Veterinary Office Assistant Certificate</b>	September January	8 months	\$5,600

\* In addition to the listed scores, successful completion of the GED exam is required for admission.

\*\* Open Studies courses are college-level courses that can be used in lieu as an admission equivalent course. Earning advanced standing in a program requires achieving a minimum program passing grade. Course credit eligibility varies on program curriculum, grade earned, and time limitations.



**88%**  
graduate  
employment  
rate

## CAREER POSSIBILITIES

- Administrative Assistant
- Bookkeeper
- Claims Adjuster
- Financial Services Representative
- Human Resources Generalist
- Insurance Broker
- Investment Manager
- Legal Assistant
- Media Relations Officer
- Medical Assistant/ Receptionist

Alberta high school or equivalent course	GED exam*	Admissions test	Open Studies course**
English Language Arts 30-1 (credit) or English Language Arts 30-2 (65%) Grade 10 Math (credit) (excl. Math 10-4 and Math 16)	Language Arts Reading and Writing: 520 Mathematics: 450	Equivalent to Grade 12 English Language Arts and Grade 10 Math	MGMT1201 (Grade D or 50%) MGMT1501 (Grade D or 50%)
English Language Arts 30-1 (credit) or English Language Arts 30-2 (65%) Math 30-1 or Math 30-2 (credit)	Language Arts Reading and Writing: 520 Mathematics: 520	Equivalent to Grade 12 English Language Arts and Grade 12 Math	MGMT1201 (Grade D or 50%) MGMT1501 (Grade D or 50%)
English Language Arts 30-1 (credit) or English Language Arts 30-2 (65%) Math 30-1 or Math 30-2 (credit)	Language Arts Reading and Writing: 520 Mathematics: 520	Equivalent to Grade 12 English Language Arts and Grade 12 Math	MGMT1201 (Grade D or 50%) MGMT1501 (Grade D or 50%)
English Language Arts 30-1 (credit) or English Language Arts 30-2 (65%) Math 30-1 or Math 30-2 (credit)	Language Arts Reading and Writing: 520 Mathematics: 520	Equivalent to Grade 12 English Language Arts and Grade 12 Math	MGMT1201 (Grade D or 50%) MGMT1501 (Grade D or 50%)
English Language Arts 30-1 (credit) or English Language Arts 30-2 (65%) Math 30-1 or Math 30-2 (credit)	Language Arts Reading and Writing: 520 Mathematics: 520	Equivalent to Grade 12 English Language Arts and Grade 12 Math	MGMT1201 (Grade D or 50%) MGMT1501 (Grade D or 50%)
English Language Arts 30-1 (credit) or English Language Arts 30-2 (65%) Math 30-1 or Math 30-2 (credit)	Language Arts Reading and Writing: 520 Mathematics: 520	Equivalent to Grade 12 English Language Arts and Grade 12 Math	MGMT1201 (Grade D or 50%) MGMT1501 (Grade D or 50%)
English Language Arts 30-1 (credit) or English Language Arts 30-2 (65%) Grade 10 Math (credit) (excl. Math 10-4 and Math 16)	Language Arts Reading and Writing: 520 Mathematics: 450	Equivalent to Grade 12 English Language Arts and Grade 10 Math	MGMT1201 (Grade D or 50%) MGMT1501 (Grade D or 50%)
English Language Arts 30-1 (credit) or English Language Arts 30-2 (65%) Grade 10 Math (credit) (excl. Math 10-4 and Math 16)	Language Arts Reading and Writing: 520 Mathematics: 450	Equivalent to Grade 12 English Language Arts and Grade 10 Math	MGMT1201 (Grade D or 50%) MGMT1501 (Grade D or 50%)
English Language Arts 30-1 (credit) or English Language Arts 30-2 (65%) Math 30-1 or Math 30-2 (credit)	Language Arts Reading and Writing: 520 Mathematics: 520	Equivalent to Grade 12 English Language Arts and Grade 12 Math	MGMT1201 (Grade D or 50%) MGMT1501 (Grade D or 50%)
English Language Arts 30-1 (credit) or English Language Arts 30-2 (65%) Grade 10 Math (credit) (excl. Math 10-4 and Math 16)	Language Arts Reading and Writing: 520 Mathematics: 450	Equivalent to Grade 12 English Language Arts and Grade 10 Math	MGMT1201 (Grade D or 50%) MGMT1501 (Grade D or 50%)

\*\*\* Esports Business Management Diploma January intake is limited to January 2024 only. The program primarily begins every September.

# School of Community Studies



Alberta College  
of Social Workers  
accreditation



Practicum  
projects and  
international  
practicums



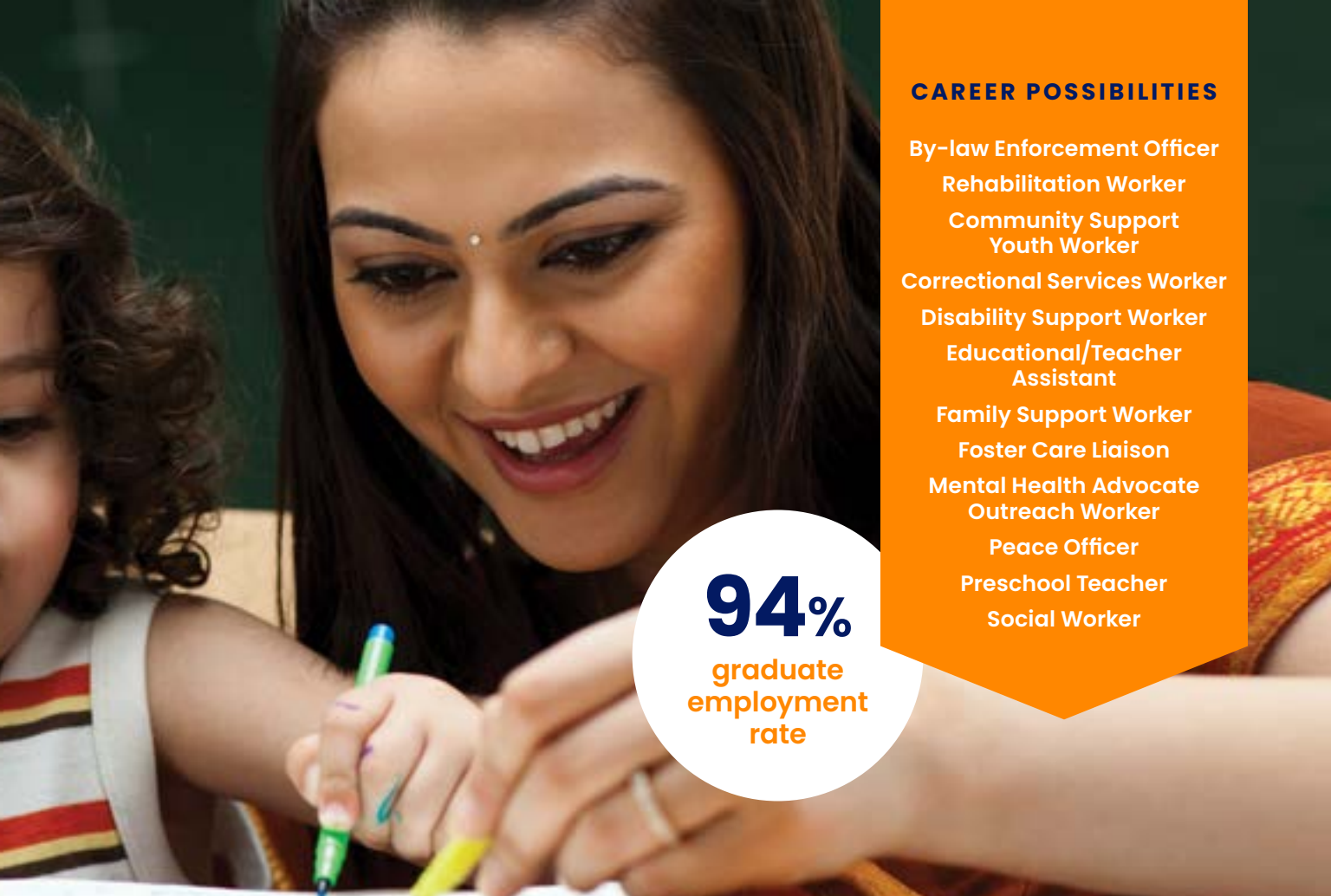
Alberta Early  
Childhood Educator  
Certifications for  
Levels 1-3

**97%**

program quality  
satisfaction

Program	Start	Duration	Fees
<b>Addiction Studies</b> Diploma	September	16 months	\$9,715
<b>Child and Youth Care</b> Diploma	September	24 months	\$12,617
<b>Disability Studies</b> Certificate	September	8 months	\$4,555
<b>Disability Studies</b> Diploma	September	16 months	\$9,748
<b>Early Childhood Education and Development</b> Diploma	September January	16 months	\$8,816
<b>Education Assistant</b> Certificate	September	8 months	\$4,803
<b>Justice Studies</b> Diploma	September	16 months	\$9,539
<b>Social Work</b> Diploma	September	24 months	\$14,476
<b>Health and Human Services Management</b> Post-Diploma Certificate	September January May	8 months	\$5,989

\* In addition to the listed scores, successful completion of the GED exam is required for admission.



## CAREER POSSIBILITIES

- By-law Enforcement Officer
- Rehabilitation Worker
- Community Support Youth Worker
- Correctional Services Worker
- Disability Support Worker
- Educational/Teacher Assistant
- Family Support Worker
- Foster Care Liaison
- Mental Health Advocate
- Outreach Worker
- Peace Officer
- Preschool Teacher
- Social Worker

**94%**  
graduate  
employment  
rate

Alberta high school or equivalent course	GED exam*	Admissions test	Open Studies course**
English Language Arts 30-1 (credit) or English Language Arts 30-2 (65%)	Language Arts Reading and Writing: 520	Equivalent to Grade 12 English Language Arts	ENGL1201 (Grade D or 50%)
English Language Arts 30-1 (credit) or English Language Arts 30-2 (65%)	Language Arts Reading and Writing: 520	Equivalent to Grade 12 English Language Arts	ENGL1201 (Grade D or 50%)
English Language Arts 30-1 (credit) or English Language Arts 30-2 (65%)	Language Arts Reading and Writing: 520	Equivalent to Grade 12 English Language Arts	ENGL1201 (Grade D or 50%)
English Language Arts 30-1 (credit) or English Language Arts 30-2 (65%) Math 30-1 or Math 30-2 (credit)	Language Arts Reading and Writing: 520	Equivalent to Grade 12 English Language Arts	ENGL1201 (Grade D or 50%)
English Language Arts 30-1 (credit) or English Language Arts 30-2 (65%)	Language Arts Reading and Writing: 520	Equivalent to Grade 12 English Language Arts	ENGL1201 (Grade D or 50%)
English Language Arts 30-1 (credit) or English Language Arts 30-2 (65%)	Language Arts Reading and Writing: 520	Equivalent to Grade 12 English Language Arts	ENGL1201 (Grade D or 50%)
English Language Arts 30-1 (credit) or English Language Arts 30-2 (65%)	Language Arts Reading and Writing: 520	Equivalent to Grade 12 English Language Arts	ENGL1201 (Grade D or 50%)
English Language Arts 30-1 (credit) or English Language Arts 30-2 (65%)	Language Arts Reading and Writing: 520	Equivalent to Grade 12 English Language Arts	ENGL1201 (Grade D or 50%)

Completion of a diploma or degree in health or human services. Equivalencies will be considered on a case-by-case basis for applicants only.

\*\* Open Studies courses are college-level courses that can be used in lieu as an admission equivalent course. Earning advanced standing in a program requires achieving a minimum program passing grade. Course credit eligibility varies on program curriculum, grade earned, and time limitations.

# School of Health and Wellness



Canadian Council  
for Accreditation  
of Pharmacy  
Programs



College of Licensed  
Practical Nurses  
of Alberta



Practicums in  
hospitals and  
pharmacies



Hands-on training  
in labs with  
cutting-edge  
technology

90%

program quality  
satisfaction

Program	Start	Duration	Fees
Health Care Aide Certificate	September January	8 months	\$7,281
Health Care Aide for English Language Learners Certificate	September	12 months	Government funded***
Interdisciplinary Therapy Assistant Diploma	September	24 months	\$15,607
Pharmacy Technician Diploma	September	16 months	\$10,552
Practical Nurse Five-Term Program Diploma	September January May	20 months	\$12,639
Practical Nurse for Internationally Educated Nurses Diploma	September January	12 months	\$11,340

\* In addition to the listed scores, successful completion of the GED exam is required for admission.

\*\* Open Studies courses are college-level courses that can be used in lieu as an admission equivalent course. Earning advanced standing in a program requires achieving a minimum program passing grade. Course credit eligibility varies on program curriculum, grade earned, and time limitations.



## CAREER POSSIBILITIES

- Program Coordinator
- Case Manager
- Interdisciplinary Therapy Assistant
- Assistant Director
- Registered Pharmacy Technician
- Licensed Practical Nurse
- Health Care Aide
- Home Support Worker
- Personal Care Aide/Attendant
- Recreation Therapy Aide

**97%**  
graduate  
employment  
rate

Alberta high school or equivalent course	GED exam*	Admissions test	Open Studies course**
English Language Arts 20-2 (60%)	Not accepted	Equivalent to Grade 11 English Language Arts	Not accepted
Stream 1: English Language Arts 20-2 (60%) Stream 2: See English language proficiency requirements on page 24	Not accepted	Stream 1: Equivalent to Grade 11 English Language Arts Stream 2: See English language proficiency requirements on page 24	Not accepted
English Language Arts 30-1 (60%) or English Language Arts 30-2 (70%) Biology 30 (60%) Math 10C (credit)	Not accepted	Not accepted	ENGL1201 (Grade C or 64%) ANAT1101 (Grade C or 64%)
Completion of a high school diploma with: English Language Arts 30-1 (60%) or English Language Arts 30-2 (70%) Math 30-1 or 30-2 (60%) Biology 30 (60%) Chemistry 30 (60%)	Not accepted	Not accepted	ENGL1201 (Grade C or 64%)
English Language Arts 30-1 (60%) or English Language Arts 30-2 (70%) Math 20-1 (credit) or 20-2 (60%) Biology 30 (60%)	Not accepted	Not accepted	ENGL1201 (Grade C or 64%) ANAT1101 (Grade C or 64%)
English Language Arts 30-1 (60%) or English Language Arts 30-2 (70%) Math 20-1 (credit) or 20-2 (60%) Biology 30 (60%) AND: Proof of international RN licensure and proof of graduation from a recognized international registered nurse (RN) program	Not accepted	Not accepted	ENGL1201 (Grade C or 64%) ANAT1101 (Grade C or 64%)

\*\*\* This pathway program is fully funded by the Government of Alberta through Foundational Learning Assistance. Students must be eligible for Learner Income Support to take this program.

# School of Technology

**88%**  
program quality  
satisfaction



IT industry-  
recognized  
certificates



Apprenticeship-  
style technology  
diploma  
programs



Women Pivoting  
in Tech bursary



National Kitchen  
and Bath  
Association  
certification



Decorators &  
Designers Association  
of Canada  
Recognized  
Institution

**82%**  
graduate  
employment  
rate

Program	Start	Duration	Fees
Digital Design Diploma	September	16 months	\$15,118
Digital Design Apprenticeship Style Diploma	September	16 months	\$16,391
Information Technology Systems Diploma	September January	16 months	\$15,424
Interior Decorating Diploma	September	16 months	\$10,022
Software Development Diploma	September January	16 months	\$14,268
Software Development Apprenticeship Style Diploma	September	16 months	\$15,900
Cloud Computing Post-Diploma Certificate	September	8 months	\$9,945
Cybersecurity Post-Diploma Certificate	September	8 months	\$13,260
Data Management and Analytics Post-Diploma Certificate	September	8 months	\$9,660
Digital Marketing Post-Diploma Certificate	September	8 months	\$6,650
Kitchen and Bath Design Post-Diploma Certificate	September	8 months	\$7,175
Software Development Post-Diploma Certificate	September	8 months	\$7,464

\* In addition to the listed scores, successful completion of the GED exam is required for admission.





## CAREER POSSIBILITIES

Software Developer  
 Data Analyst Network Administrator  
 Business and Systems Analyst  
 Cybersecurity Analyst  
 Cloud Infrastructure Architect  
 Digital Marketing Specialist  
 Graphic Designer  
 Interior Decorator and Consultant  
 Kitchen and Bath Designer

Alberta high school or equivalent course	GED exam*	Admissions test	Open Studies course**
English Language Arts 30-1 (credit) or English Language Arts 30-2 (65%)	Language Arts Reading and Writing: 520	Equivalent to Grade 12 English Language Arts	MGMT1201 (Grade D or 50%)
English Language Arts 30-1 (credit) or English Language Arts 30-2 (65%)	Language Arts Reading and Writing: 520	Equivalent to Grade 12 English Language Arts	MGMT1201 (Grade D or 50%)
English Language Arts 30-1 (credit) or English Language Arts 30-2 (65%) Math 30-1 or 30-2 (credit)	Language Arts Reading and Writing: 520	Equivalent to Grade 12 English Language Arts and Grade 12 Math	MGMT1201 (Grade D or 50%) MGMT1501 (Grade D or 50%)
English Language Arts 30-1 (credit) or English Language Arts 30-2 (65%) Math 10C (60%)	Language Arts Reading and Writing: 520	Equivalent to Grade 12 English Language Arts and Grade 10C Math	MGMT1201 (Grade D or 50%) MGMT1501 (Grade D or 50%)
English Language Arts 30-1 (credit) or English Language Arts 30-2 (65%) Math 30-1 or 30-2 (credit)	Language Arts Reading and Writing: 520	Equivalent to Grade 12 English Language Arts and Grade 12 Math	MGMT1201 (Grade D or 50%) MGMT1501 (Grade D or 50%)
English Language Arts 30-1 (credit) or English Language Arts 30-2 (65%) Math 30-1 or 30-2 (credit)	Language Arts Reading and Writing: 520 Mathematics: 520	Equivalent to Grade 12 English Language Arts and Grade 12 Math	MGMT1201 (Grade D or 50%) MGMT1501 (Grade D or 50%)
Completion of a diploma or a degree in information technologies, computer engineering, software development, management information systems, or equivalent.			
Completion of a diploma or a degree in information technologies, computer engineering, software development, management information systems, or equivalent			
Completion of a diploma or a degree in business administration, computer engineering, management information systems, information technology, engineering, software development, or equivalent Math 30-1 or Math 30-2 (credit)			
Completion of a diploma or a degree			
Completion of a diploma or degree in interior decorating, interior design, architectural technology, or a related program by departmental approval. Education and work experience equivalencies will be considered on a case-by-case basis.			
Completion of a diploma or degree. Math 30-1 or Math 30-2 (credit)			

\*\* Open Studies courses are college-level courses that can be used in lieu as an admission equivalent course. Earning advanced standing in a program requires achieving a minimum program passing grade. Course credit eligibility varies on program curriculum, grade earned, and time limitations.

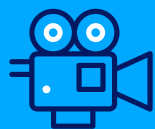
# Bow Valley College Centre for Entertainment Arts

**36**

professional-  
grade  
applications

**24 hour**

access  
to all  
software



CEA work  
initiative



Work with industry  
standard  
tools



Leadership from  
the industry

Program	Start	Duration	Fees
<b>Advanced 3D Animation and 3D Modelling</b> Diploma	September January	24 months	\$38,510
<b>Advanced Entertainment Arts Production Management</b>	September January	24 months	\$38,510
<b>Advanced Film Production</b> Diploma	September January	24 months	\$38,510
<b>Advanced Game Development</b> Diploma	September January	24 months	\$28,710
<b>Advanced Visual FX (Virtual Production)</b> Diploma	September January	24 months	\$38,510
<b>Foundation in Entertainment Arts</b> Certificate	September January	12 months	\$21,406

## Program portfolio requirements

**Advanced 3D Animation and 3D Modelling** Diploma  
**Advanced Visual FX (Virtual Production)** Diploma  
**Advanced Game Development** Diploma

**Advanced Entertainment Arts Production Management** Diploma

**Advanced Film Production** Diploma

**Foundation in Entertainment Arts** Certificate



## CAREER POSSIBILITIES

Composer  
 3D Animator and Modeller  
 Character and Creature  
 Animator  
 Game Developer  
 Rigger  
 Texturing and Surfacing  
 Artist  
 Game and Level Designer

Alberta high school or equivalent course	GED exam	Admissions test
Completion of a high school diploma or English Language Arts 30-1 or 30-2 (credit)	Not accepted	Equivalent to Grade 12 English Language Arts
Completion of a high school diploma or English Language Arts 30-1 or 30-2 (credit)	Not accepted	Equivalent to Grade 12 English Language Arts
Completion of a high school diploma or English Language Arts 30-1 or 30-2 (credit)	Not accepted	Equivalent to Grade 12 English Language Arts
Completion of a high school diploma or English Language Arts 30-1 or 30-2 (credit)	Not accepted	Equivalent to Grade 12 English Language Arts
Completion of a high school diploma or English Language Arts 30-1 or 30-2 (credit)	Not accepted	Equivalent to Grade 12 English Language Arts
Completion of a high school diploma or English Language Arts 30-1 or 30-2 (credit)	Not accepted	Equivalent to Grade 12 English Language Arts

Portfolio submission of 15-20 pieces of artistic/technical work (for example, sketches, renderings, games, design variations, code snippets) in digital format. Portfolios should reflect the applicant's personal artistic interests and identity. Successful applicant portfolios will reflect a broad range of techniques, influences, styles, and subject matter.

Portfolio submission, which should include a written submission (maximum 500 words) or a short video (maximum five minutes) based on one of the following:

- A short timeline of how you would plan the production of a film (can be very basic)
- A discussion of sets, locations, costumes, and more in a film and how you felt it worked or didn't work
- A project spreadsheet (real or imagined) detailing either financial, planning, or other elements of a project
- A short explanation of why you love film and would like to work in that industry
- An online highlight reel or portfolio of work that you have created

Portfolio submission, which should include a written submission (maximum 500 words) or a short video (maximum five minutes) based on one of the following:

- A short essay about a film you like and why (what makes you enjoy it)
- A short essay about the film you want to make
- A short essay about a film you saw and how you would change it
- An online highlight reel or portfolio of work that you have created

Portfolio submission of 5-10 pieces (8+ pieces are recommended) of artistic work (for example, sketches, renderings, design variations) in digital format. Portfolios should reflect the applicant's personal artistic interests and identity. Successful applicant portfolios will reflect a broad range of techniques, influences, styles, and subject matter.

# Regional campuses

Cochrane

Okotoks

90%  
graduate  
employment  
rate

94%  
program quality  
satisfaction

Program	Start	Duration	Fees
<b>Administrative Professional Certificate</b>	September	8 months	\$5,683
<b>Business Administration Certificate</b>	September	8 months	\$6,310
<b>Early Childhood Education and Development Certificate</b>	September January	8 months	\$4,483
<b>Early Childhood Education and Development Diploma</b>	September	16 months	\$8,816
<b>Health Care Aide Certificate</b>	September January	8 months	\$7,281
<b>Practical Nurse Diploma</b>	September	20 months	\$12,639
<b>Recreation Therapy Aide Certificate</b>	September January	5 months	\$1,623

\* In addition to the listed scores, successful completion of the GED exam is required for admission.



**Airdrie**

**LOCATIONS**

Bow Valley College's regional programming serves the educational needs of residents living in areas surrounding Calgary, such as Rocky View, Wheatland, Foothills, Kananaskis, and Big Horn, giving students access to advising, classrooms, and invigilation.

**PROGRAM DELIVERY**

Programming is offered through a blend of in-person and online methods.

Alberta high school or equivalent course	GED exam*	Admissions test	Open Studies course**
English Language Arts 30-1 (credit) or English Language Arts 30-2 (65%) Grade 10 Math (credit) (excl. Math 10-4 and Math 16)	Language Arts Reading and Writing: 520	Equivalent to Grade 12 English Language Arts and Grade 10 Math	MGMT1201 (Grade D or 50%) MGMT1501 (Grade D or 50%)
English Language Arts 30-1 (credit) or English Language Arts 30-2 (65%) Math 30-1 or Math 30-2 (credit)	Language Arts Reading and Writing: 520	Equivalent to Grade 12 English Language Arts and Grade 12 Math	MGMT1201 (Grade D or 50%) MGMT1501 (Grade D or 50%)
English Language Arts 30-1 (credit) or English Language Arts 30-2 (65%)	Language Arts Reading and Writing: 520	Equivalent to Grade 12 English Language Arts	ENGL1201 (Grade D or 50%)
English Language Arts 30-1 (credit) or English Language Arts 30-2 (65%)	Language Arts Reading and Writing: 520	Equivalent to Grade 12 English Language Arts	ENGL1201 (Grade D or 50%)
English Language Arts 20-2 (60%)	Not accepted	Equivalent to Grade 11 English Language Arts	Not accepted for Health Care Aide
English Language Arts 30-1 (60%) or English Language Arts 30-2 (70%) Math 20-1 (credit) or 20-2 (60%) Biology 30 (60%)	Not accepted	Not accepted	ENGL1201 (Grade C or 64%) ANAT1101 (Grade C or 64%)
English Language Arts 10-1 or 10-2 (credit) AND: Previous education or work experience in health or human services or successful completion of HMSV9102	Language Arts Reading and Writing: 520	Equivalent to Grade 10 English Language Arts	ENGL1201 (Grade D or 50%)

\*\* Open Studies courses are college-level courses that can be used in lieu as an admission equivalent course. Earning advanced standing in a program requires achieving a minimum program passing grade. Course credit eligibility varies on program curriculum, grade earned, and time limitations.

# Alternative pathways for admission

Bow Valley College recognizes that college-bound students come from all backgrounds and lived experiences. We offer alternative pathways for academic admission into certificate or diploma programs.\*

In addition to academic requirements, all applicants must satisfy a program's language proficiency and other non-academic requirements.



## Home-based students

A home-based student is a Canadian resident who completed their high school education through home schooling. A home-based student may satisfy the academic admission requirements through multiple paths.

- \* Eligible programs include certificate or diploma programs the Centre for Entertainment Arts, the School of Technology, the Chiu School of Business, and the School of Community Studies.



## Mature (21+) students

A mature student is a Canadian resident aged 21 or older at the time of application who may not have completed the high school courses required for admission. A mature student may satisfy the academic admission requirements through multiple paths.

Many individuals over age 21 may feel they are mature students but have indeed completed the high school courses required for admission. We encourage these students to apply and submit their high school transcripts to expedite their admissions process.



## Additional achievement pathways

Bow Valley College recognizes the alternative achievements in lieu of listed high school courses for academic admission, including the Bow Valley College Admissions Test, Bow Valley College Open Studies courses, prior post-secondary credits, the SAT exam, and International Baccalaureate programs.

# English language proficiency requirements

## TEST VALIDITY

CLB, IELTS Academic, and TOEFL results are valid for two years from the day of testing.

Results that expire prior to the start date of the program cannot be accepted.

Official results must be submitted.

Program	BVC Academic English	CLB	IELTS Academic
<b>All post-secondary programs</b> (except those listed below)	Minimum of Grade B- in AE2	8 in each strand	6.0 with minimum band score of 6.0
<b>Health Care Aide</b> Certificate	—	7 in each strand	6.0 overall, with no section score below 5.5
<b>Health Care Aide for English Language Learners – Stream 1</b>	—	6 in each strand or a combination of 6 and 7	5.0
<b>Health Care Aide for English Language Learners – Stream 2</b>	—	7 in each strand or a combination of 7 and 8	6.0 overall with no section score below 5.5
<b>Interdisciplinary Therapy Assistant</b> Diploma	Minimum of Grade B- in AE2	8 in each strand	6.5 with minimum band score of 6.0
<b>Pharmacy Technician</b> Diploma	—	—	6.5 with minimum band score of 6.0
<b>Practical Nurse</b> Diploma <b>Practical Nurse for Internationally Educated Nurses</b> Diploma	Minimum of Grade B in AE2	8 in each strand	Listening: 7.5 Reading: 6.5 Writing: 7.0 Speaking: 7.0
<b>Recreation Therapy Aide</b> Certificate	Minimum of Grade B in AE2	7 in each strand	5.5 with minimum band score of 5.0

\* This recognition applies to all programs except the Pharmacy Technician Diploma and Health Care Aide Certificate due to accreditation rules beyond the College's control.





## ENGLISH LANGUAGE PROFICIENCY

**Bow Valley College recognizes proof of English language proficiency from several countries for most programs.\***

The applicant must have completed three years of full-time secondary education (high school) at a recognized public school, or one year of full-time post-secondary education at a recognized public college or university where the primary language of education is English. Visit [bowvalleycollege.ca/elp](http://bowvalleycollege.ca/elp) for a complete list.

TOEFL	Duolingo	PTE A	CAEL	CELBAN	CELP
83	110	59 - 64	50	—	—
71	95 overall	—	—	7 in each area	7 general, with no section score below 6.0
53	85	—	—	—	—
71	110	—	—	7 in each area	7 general, with no section score below 6.0
84 with no section score below 21	—	59-64	—	—	—
91 with minimum scores, Listening: 21 Reading: 22 Writing: 25 Speaking: 23	—	—	—	—	—
92	—	—	—	—	—
71	95	42-50	—	—	—

# School of Foundational Learning



Free tutoring  
in all subjects

## Build a foundation for academic success

Academic Upgrading at the School of Foundational Learning provides the building blocks to help you achieve a lifetime of learning.

- Get back on track for all core high school subjects (English, math, science, biology, chemistry, physics, and computer applications)
- For those not ready for high school, our Literacy and Essential Skills courses will help you improve your reading, writing, math, and computer skills
- Upgrade to meet entrance requirements for college or university, or to advance your current career

## Flexible learning

Study in a traditional classroom, through flexible formats, or fully online.

- Full- and part-time study options
- Government of Alberta–funded courses
- Alberta Education high–school credits\*

\* Some programs may not be applicable. For more information, visit [bowvalleycollege.ca/upgrading](http://bowvalleycollege.ca/upgrading).



**1:25**

average  
faculty-to-student  
ratio in our  
classrooms

**4,000**

students take  
upgrading at Bow  
Valley College  
each year

#### **PROGRAMS**

- Basic Literacy to Grade 12
- Alberta High School Diploma
- Indigenous Pathways  
to Employment
- Indigenous Upgrading

# School of Global Access

## WHAT WE OFFER

Full- and part-time  
LINC-funded programs

Full-time Government of  
Alberta-funded language  
training programs

English for  
Academic Purposes

Part-time regional  
and online LINC programs

Full-time ELL  
for international students

Specialized programs  
for young adults (18-24)



Career Services  
for Albertans



Directions for  
Immigrants

## CAREER POSSIBILITIES

Teach English to Speakers  
of Other Languages  
(TESOL certification)



Intercultural  
competencies  
for leaders



Standard One  
certification from  
TESL Canada

### The language of opportunity

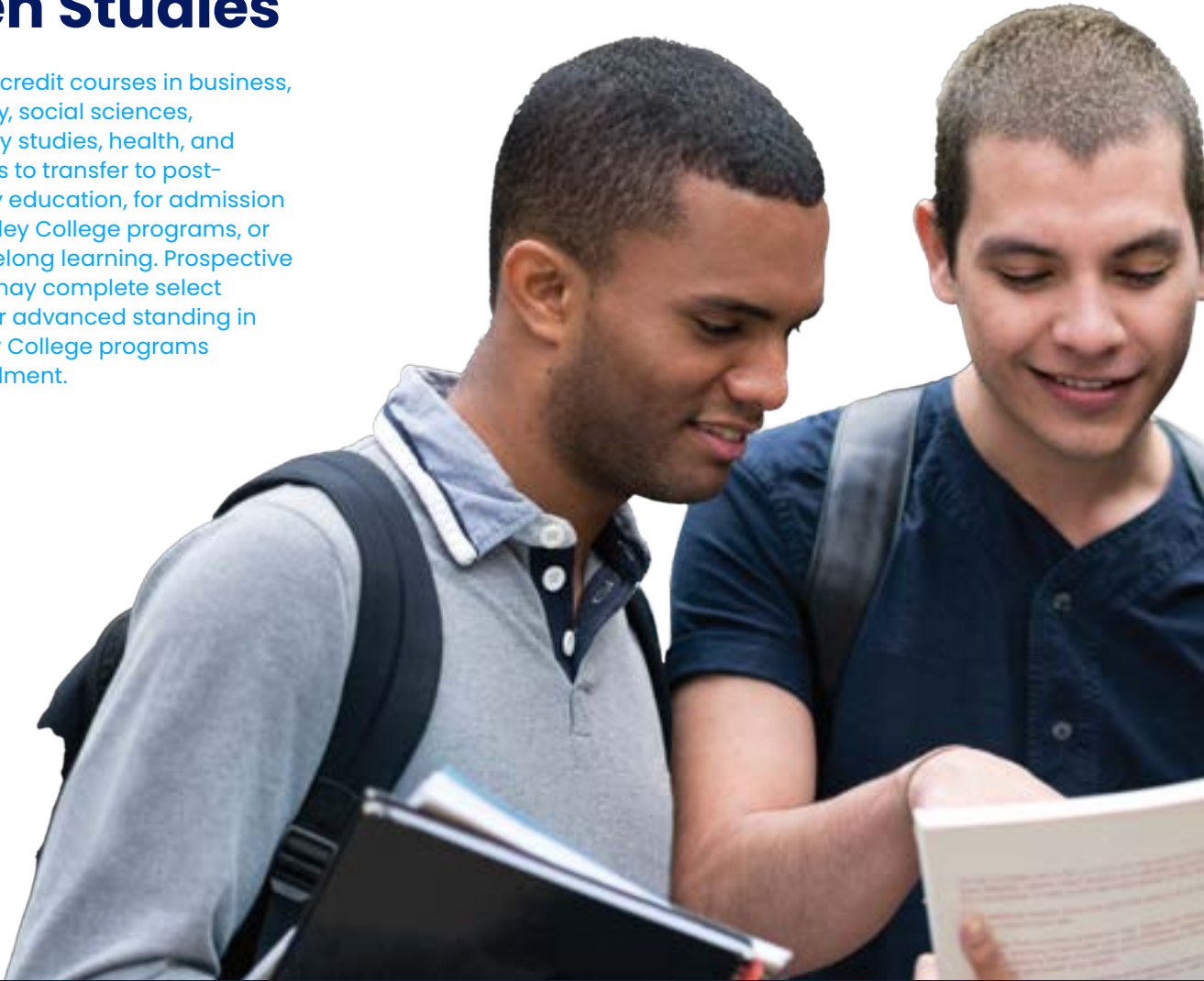
Strong English language skills are a pathway to success in Canada. Our team partners with our students to map out enriching opportunities and programs that help our students improve their lives.

### A pathway to further education

The English for Academic Purposes program meets the language proficiency requirements for many Bow Valley College post-secondary programs. Completion of the youth programs allows direct entry into the English for Academic Purposes program or foundational courses in the School of Foundational Learning.

# Open Studies

Complete credit courses in business, technology, social sciences, community studies, health, and humanities to transfer to post-secondary education, for admission to Bow Valley College programs, or for your lifelong learning. Prospective students may complete select courses for advanced standing in Bow Valley College programs upon enrolment.



## Transfer opportunities

Start at Bow Valley College and go almost anywhere. Our courses are recognized by universities, colleges, and professional associations around the world. Bow Valley College is a publicly funded, comprehensive community college founded in 1965, and is a member of Colleges and Institutes Canada.

Take courses  
or entire programs  
and transfer  
them towards  
a university  
degree

Visit [bowvalleycollege.ca/transfer](https://bowvalleycollege.ca/transfer) to view all incoming and outgoing transfer agreements.

We encourage applicants to confirm the receiving institution's admissions information. Transfers between Alberta institutions can be viewed at [transferalberta.alberta.ca](https://transferalberta.alberta.ca).

# Extended Education

Bow Valley College offers multiple pathways to your future career. Through Extended Education, you may complete courses for industry certifications, advanced competencies, and lifelong learning. Extended Education offers non-credit options for professional growth, with courses focusing on up-to-date and in-demand competencies.



## AREAS OF STUDY

Accounting  
Payroll  
Bookkeeping  
Microsoft Office  
Business  
Maintenance management  
Advanced LPN skills  
Human services

# Micro-credentials

Pivot-Ed Micro-credentials by Bow Valley College offer a cost-effective means of obtaining certifications that demonstrate competencies in high-demand industry areas as required by employers. Micro-credentials are designed to help you learn at your desired pace and focus on relevant competencies for your career goals, providing the flexibility you need to succeed in today's job market.

## AREAS OF STUDY

Cloud  
Data  
Digital Design  
Early Childhood Education  
and Development  
People Strategy  
Software Development

Upskill and  
reskill for the  
changing  
economy

Designed  
with leading  
industry  
partners

# Supporting your success

Access cultural resource supports, mentorship, and leadership opportunities

Connect with devoted and passionate employees for support

Participate in ceremonies led by Indigenous Knowledge Keepers



## How we support you

Support services that help you succeed.



### Connect

Experienced, caring instructors want to see you reach your goals. Student services help you with learning challenges, stress, and more. Find everything you need to make your life better on and off campus. From academic advising to financial aid to student life, we can help.



### Access

Discover key services such as financial empowerment, personal counselling and wellness groups, career and employment support, academic advising, and academic accommodations for students with disabilities. The Success—Early Support and Retention program helps students access the support they need to succeed.



### Engage

Take part in volunteer opportunities, leadership development, and new student orientation; or, access the Multi-Faith Space and other spaces and opportunities to connect and build community. My Success Hub is a free, online information resource available at your fingertips, 24/7.





Elder Florence Kelly, Ojibwas of Onigaming First Nation

Learn from Knowledge Keepers, Ceremonialists, Indigenous language speakers, and Elders

**THE INIIKOKAAN CENTRE**

The “Buffalo Lodge” is the place where all Nations belong. The Iniiikokaan Centre offers supports to self-identified Indigenous students in achieving their goals through cultural connections and opportunities to participate in community. Students can also address barriers to success as they define them.

### Students’ Association

The Students’ Association of Bow Valley College (SABVC) is your voice on campus and your advocate to all levels of government. It is also your access point for volunteer opportunities, career and learning events, and other services for your success.

### Get involved

SABVC has a great social space to hang out in between classes, connect with other students, and find out about volunteer opportunities.

### Get support

SABVC provides funds annually to support scholarships for Bow Valley College students who demonstrate outstanding academic performance, excellent leadership skills, and strong community involvement.



### Assist

Our Financial Aid team can help you learn more about student loans, budgeting, and other financial supports. Bow Valley College offers over 300 awards for new students. Entrance awards can range from one-time awards of \$1,000 to awards that are renewable to a maximum of \$10,000.

# See their journeys: Alumni profiles



## Pooja Maheshwari

Pooja was eager for a change after a 10-year engineering career in Pakistan. She discovered Bow Valley College through online research and was impressed by how fast she could complete a job-ready program.

Pooja enrolled in the Cybersecurity Post-Diploma Certificate at Bow Valley College because it incorporated her previous engineering knowledge with new skills. Despite completing the program during the COVID-19 pandemic, primarily through online learning, she developed lasting relationships with her teachers and peers. She now volunteers with Bow Valley College Alumni to help others make new connections.

“Bow Valley College provides a range of programs to kickstart your journey,” Pooja says. On her convocation day in 2022, she received a job interview from a major Calgary-based educational institution and now works as a network analyst.

Bachelor's  
Degree in  
Computer System  
Engineering

Cybersecurity  
Post-Diploma  
Certificate

Network  
Analyst

## Damilola Agbaje

Damilola, a Nigerian immigrant who moved to Canada six years ago, struggled to find a job that could support her family despite her extensive background and education in human resources. She contacted other immigrants in similar situations and discovered that getting an industry-recognized education from a Canadian institution was the best route.

Bow Valley College's fast, career-focused programs with instructors who were experts in their fields caught her attention. She says, "I wanted to go to class and be focused on what I'm doing and get the best education I can get."

Upon receiving her certificate, Damilola obtained her associate membership with the Chartered Professionals in Human Resources Alberta (CPHRAB) and is currently employed in the oil and gas industry. She credits Bow Valley College for giving her the ladder to advance her professional career.

**Bachelor's  
Degree in  
Communication**

**Master's  
Degree in  
Global  
Marketing**

**Human  
Resources  
Certificate**

**Human  
Resources  
Analyst**



## Amanda Leeman, Áísokinakiákii (Nurse)

One thing Amanda Leeman values most about her Bow Valley College education is the confidence she gained. "The first day of class," she recalls, "my teachers and peers were so welcoming that I forgot how nervous I was. As I continued my education, my confidence kept growing."

She wanted to pursue a career in health care to help make a positive impact on people's lives. This desire is a part of her identity. Her Blackfoot name, Áísokinakiákii, means Nurse. In pursuit of her goals, Amanda started her Bow Valley College career as a student in the Academic Upgrading Program. In 2016, she graduated with a Practical Nurse Diploma.

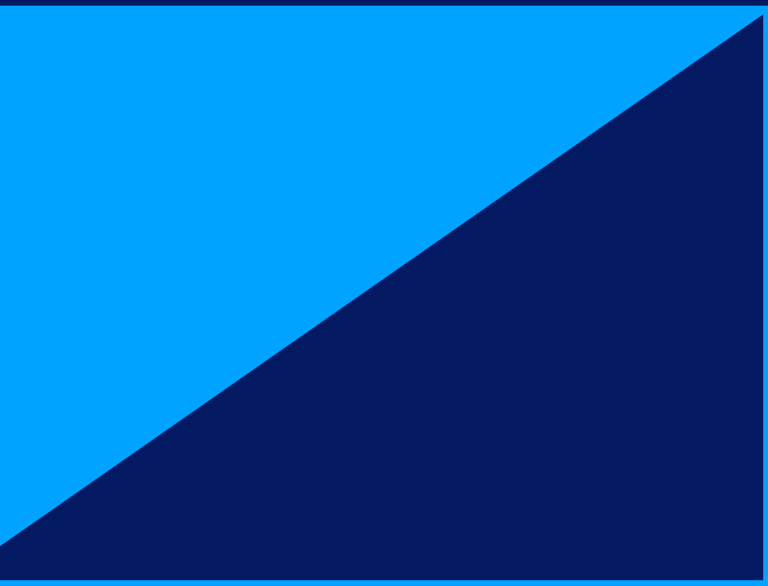
Amanda's commitment to her goals did not go unnoticed. As a student, she received the Paul and Gerri Charette Award. The award celebrates a student's determination to create a better future.

Today, Amanda works as a licensed practical nurse at a dermatology clinic. "I get to build trusting relationships with my patients and colleagues by utilizing the confidence I gained at Bow Valley College."

**Academic  
Upgrading**

**Practical Nurse  
Diploma**

**Licensed  
Practical Nurse**



**Call us**

403-410-1402

**Email us**

[info@bowvalleycollege.ca](mailto:info@bowvalleycollege.ca)

**Visit us**

Welcome Centre

First Floor, South Campus

345 – 6 Avenue SE

Calgary, AB T2G 4V1



@BowValley



@bowvalleycollege



@bowvalley

